

tubul **ARCH**

# LT8F | UL A+B | CW5-Series

Datasheet

## Project Details

Project Name:

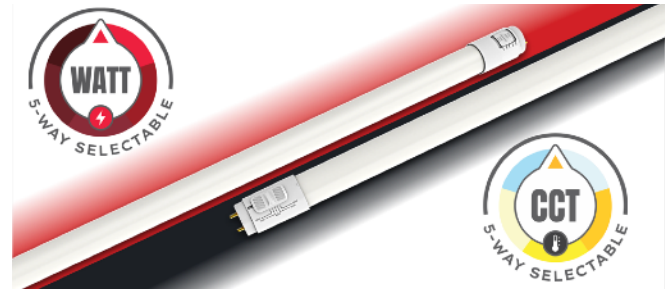
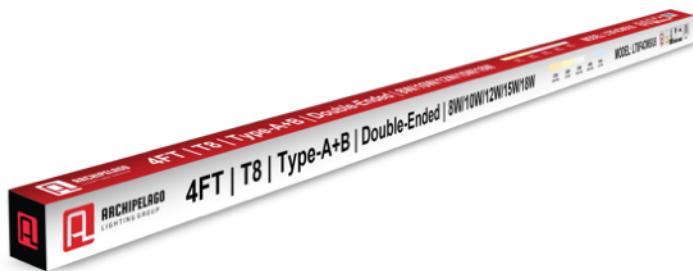
Fixture Schedule:

Project Number:

Notes:

## Key Features

- ✓ Color & Wattage Selectable 4FT T8
- ✓ smarT8: Compatible to Ballast (UL-A) and Bypass (UL-B)
- ✓ Full Length Glass Frosted Lens With 320° Light Distribution, Zero Pixelation
- ✓ Bypass: Double-Ended
- ✓ Suitable for enclosed, dry & damp locations
- ✓ Compatible to Shunted and/or Non-Shunted Lamp Holders
- ✓ All Glass Construction with PET Coating — Meets NSF Standards for Food Safety
- ✓ Universal Input Voltage: 120–277V



## Model Specifications

Model	Length (FT)	Lumen (lm)	WATTselect (W)	CCTselect (K)
LT8F4CW5/U5	4FT	8W:	5-WATTselect: 8W / 10W / 12W / 15W / 18W *	5-CCTselect: 2700K / 3000K / 3500K / 4000K / 5000K *
		2700K-1100lm		
		3000K-1150lm		
		3500K-1200lm		
		4000K-1200lm		
		5000K-1200lm		
		10W:		
		2700K-1300lm		
		3000K-1350lm		
		3500K-1450lm		
		4000K-1450lm		
		5000K-1450lm		
		12W:		
		2700K-1600lm		
		3000K-1650lm		
		3500K-1750lm		
		4000K-1750lm		
		5000K-1750lm		
		15W:		
		2700K-1900lm		
		3000K-1950lm		
		3500K-2050lm		
		4000K-2050lm		
		5000K-2050lm		
		18W:		
		2700K-2200lm		
		3000K-2250lm		
		3500K-2350lm		
		4000K-2350lm		
		5000K-2350lm		

\* NOTE: Factory default setting

## Electrical Characteristics: UL-A

Rated Wattage (Selectable)	18W
Rated Voltage	120 - 277V
Power Factor	>0.9
Ballast Current (@120V)	220mA
Lamp Current (@120V)	190mA

## Electrical Characteristics: UL-B

Rated Voltage	120 - 277V
Power Factor	>0.9

## Certifications



## Applications



## Product Warranty \*

7-Year Warranty



50,000 Hrs



\* Standard warranty. Extended warranty available.

Archipelago Lighting, Inc.

| Headquarter: 4615 State Street, Montclair, CA 91763

| USA Production: 9345 Sycamore Canyon Blvd, Riverside, CA 92508

Contact Us

[www.archipelagolighting.com](http://www.archipelagolighting.com)

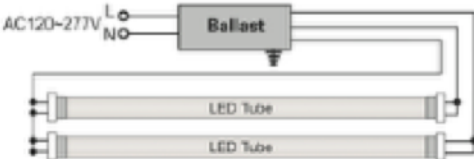
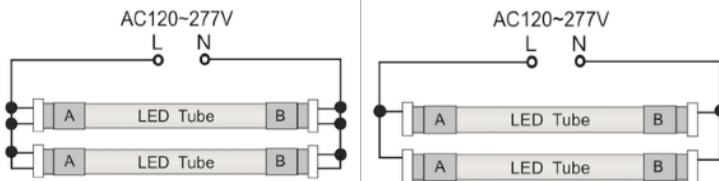
+1 (866) 912-3220



## Ordering Guide

Model Series	Length (ft)	WATTselect (W) + CCTselect (K)	Voltage (V)	Series
<b>LT8F</b> LED UL A+B T8 Linear Tube	4 4FT	<b>CW5</b> 5-WATTselect: 8W 10W 12W 15W 18W 5-CCTselect: 2700K 3000K 3500K 4000K 5000K	- U 120-277V	5 Compliant to DLCv5.1
<b>CATALOG #:</b>				
<b>LT8F</b>	4	CW5	- U	5

## Installation Methods

Installation Methods	Configuration Diagrams
<b>Ballast Compatible (UL-A)</b>  Make sure the ballast is on the compatible list. If the ballast you intend on using is not on the list, you may choose to use ballast bypass mode shown below.	
<b>Bypass Double-Ended (UL-B)</b>  May be wired as bi-pin powered or single-pin powered as shown in the configuration diagram to the right.	

## DLC Model Guide and Performance Specifications

Model Numbers	DLC Product ID	Lamp Type-B (W)	Lumen	Efficacy	CCT	CRI	PF	Input Voltage
LT8F4CW5/U5	S-S2V6J9	15W	1,900lm	127lm/W	2700K	≥83	≥0.90	120-277V 50/60Hz